

A PREMIUM ADDRESS
NEAR MAHINDRA SEZ

SEZ AASHIYANA

LIVE TODAY, PROSPER TOMORROW.

STARTING AT

₹28,900/-

— प्रति वर्ग बज —



PRIME
LOCATION



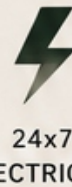
SAFE &
SECURE



WIDE
ROADS



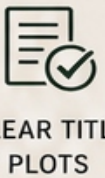
WATER
SUPPLY



24x7
ELECTRICITY



GREEN
ENVIRONMENT



CLEAR TITLE
PLOTS

KEY DISTANCES

	Jayshree Periwal School / Redclip	1 km
	Aashiyana Umang	700 m
	St. Xaviers College	2 km
	Mahindra SEZ	700 m
	Ajmer Road	2.5 km
	Ring Road	3.5 km



WELL PLANNED TODAY,
BRIGHTER TOMORROW.



HIGH RETURN
POTENTIAL



IDEAL FOR
FAMILY LIVING



GREAT
CONNECTIVITY

SECURE YOUR FUTURE.

INVEST IN A LIFE OF GROWTH & COMFORT.

TO JAIPUR >>>

ROAD 300'-00" WIDE

NATIONAL HIGHWAY

<<< TO AJMER

PROPOSED LAYOUT PLAN OF

सेज आशियाना

UNDER KHASRA NO. 671,672
AT REVENUE VILLAGE - JHAI, TEH.- SANGANER
DIST. - JAIPUR, (RAJASTHAN)

MAHINDRA SEZ

MAHINDRA SEZ

J K LAXMIPATI
UNIVERSITY

SEZ ROAD 250'-00" WIDE

SEZ ROAD 250'-00" WIDE

ROAD 40'-00" WIDE

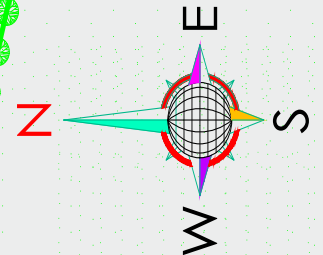
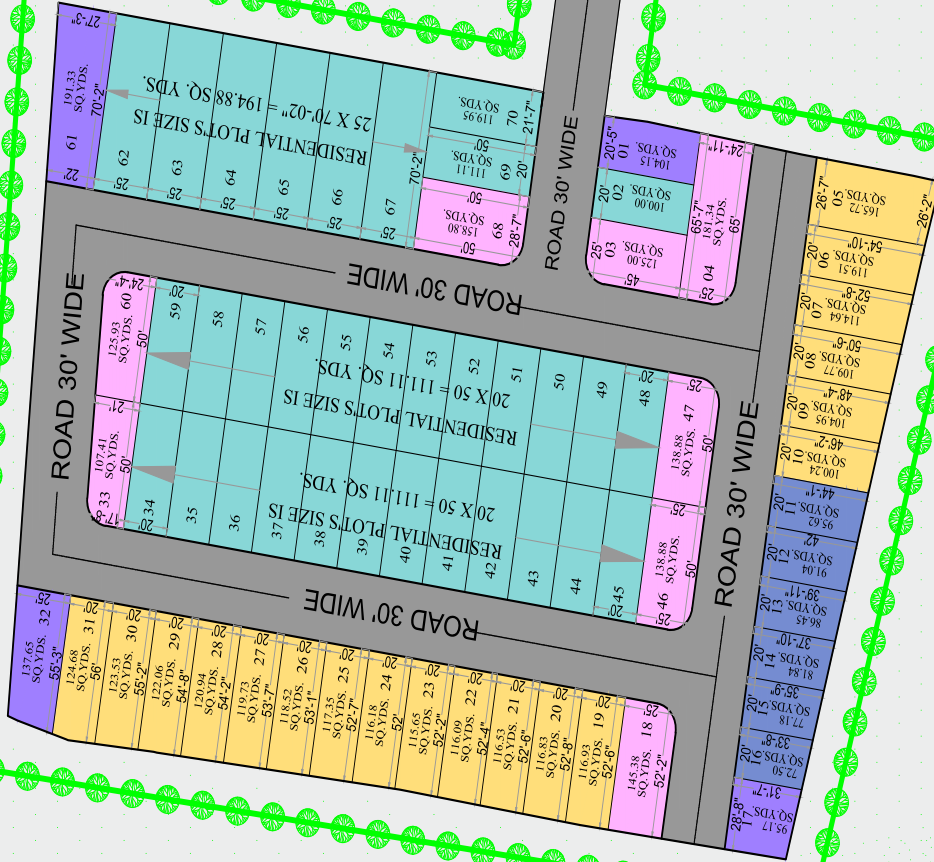
ROAD 30' WIDE

ROAD 30' WIDE

ROAD 30' WIDE

ROAD 30' WIDE

ROAD 30' WIDE



PREMIUM PLOTS AT

SEZ AASHIYANA

Smart Investment. Bright Future.



PRIME LOCATION



WELL CONNECTED



HIGH INVESTMENT POTENTIAL



CLEAR TITLE PLOTS



SEZ AASHIYANA

ATTRACTIVE PRICE

₹ 28,900

PER SQ YRD

IDEALLY CONNECTED

Close to Key Landmarks, Closer to Everything That Matters



Jayshree Perival School / Redclip

1 km

Mahindra SEZ

700 m



Aashiyana Umang

700 m

Ajmer Road

2.5 km



St. Xaviers College

2 km

Ring Road

3.5 km



Prime Location



Save Travel Time



Great Connectivity



Better Lifestyle



TOWNSHIP FEATURES & AMENITIES



STREET LIGHTS

Well-lit streets for safety and security



WATER SUPPLY

24x7 clean and reliable water supply



SEWERAGE SYSTEM

Underground sewerage for a hygienic environment



GATED ENTRY

Secure gated entry for a safe community



PAVED ROADS

Wide, durable and well-maintained roads

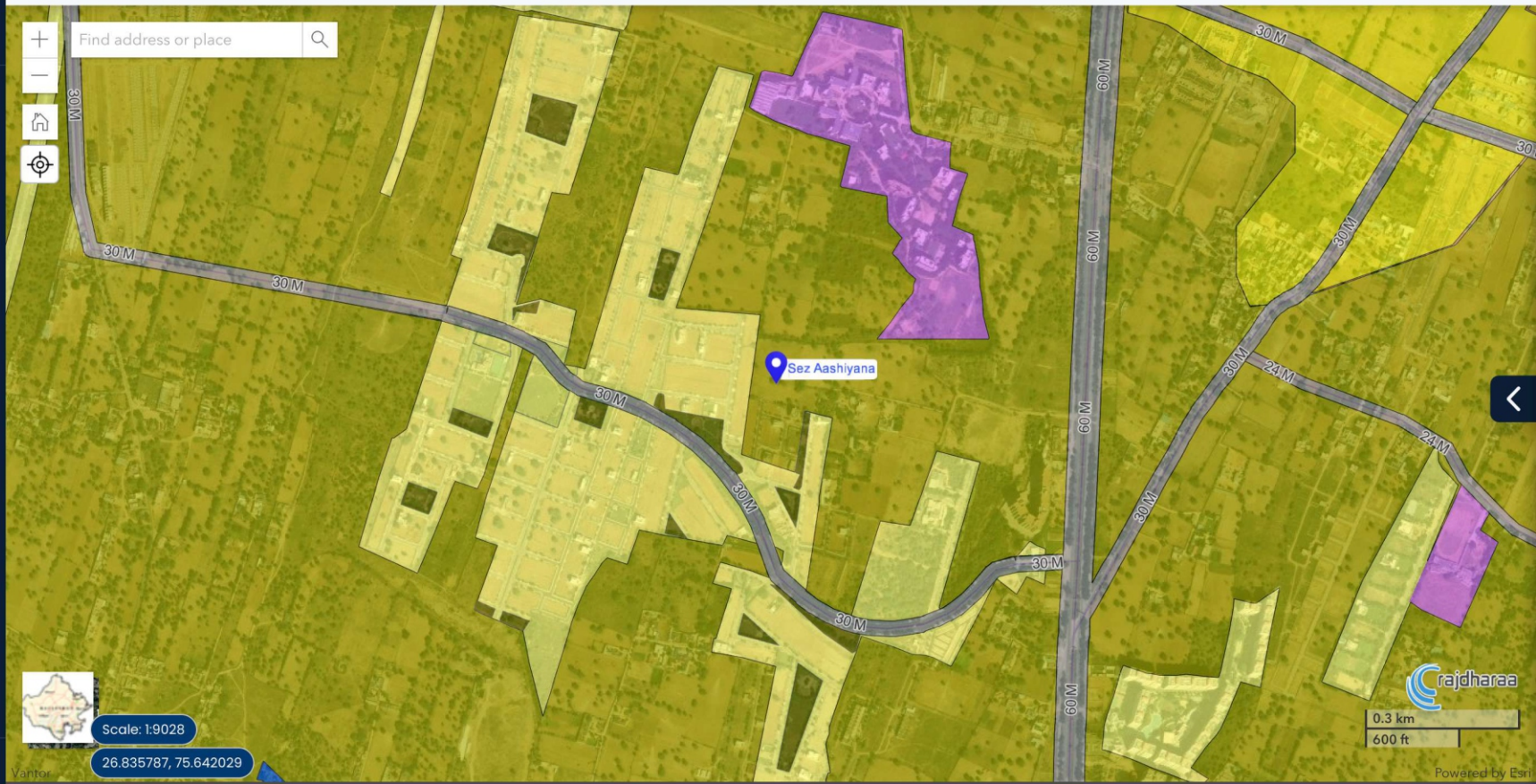


ELECTRICITY

Underground electricity with uninterrupted supply

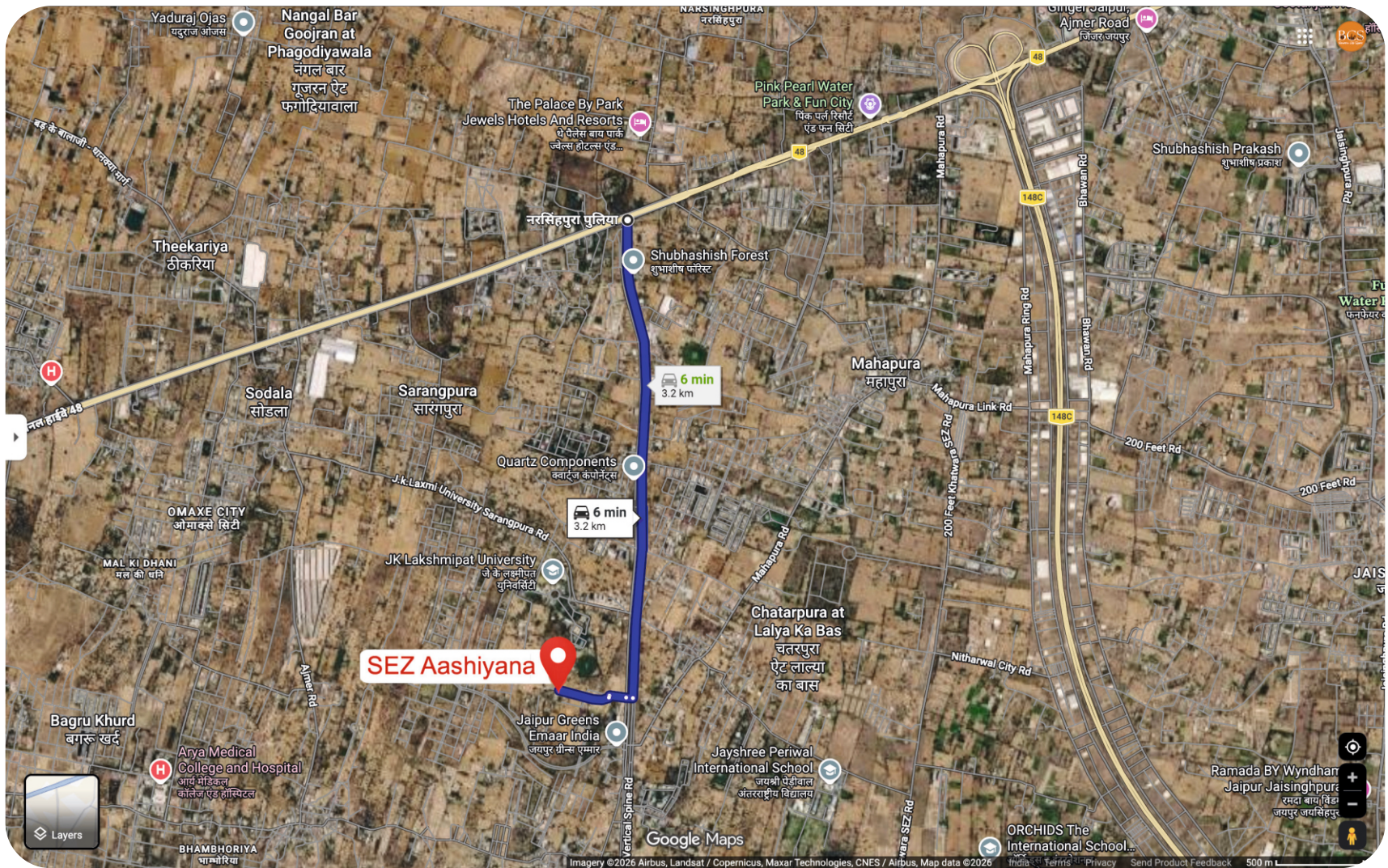


Urban GIS Portal



0.3 km
600 ft

Powered by Esri



CURRENTLY MORE THAN 125 COMPANIES ARE OPERATIONAL IN MAHINDRA SEZ



CUSTOMER SUPPORT

FOR COMPLAINTS & QUERIES

For any complaints or queries, please contact our support number.

SUPPORT NUMBER
9462987911

This number is only for complaints and queries.

FOR PROPERTY DETAILS

For all property related information and assistance, please contact your advisor.

ADVISOR NAME _____
ADVISOR NUMBER _____



WE ARE HERE TO HELP YOU!

THANK YOU FOR YOUR TRUST.

Scan
FOR
MORE
DETAILS

